



REGATTA SUPPORT RIB PROJECT

595
BENACO



The newest entry in *Cantieri Capelli's* range, **595 Benaco** was born from the close synergy with the sports sailing sector in order to create a new point of reference for boats supporting professional and amateur regattas and sailing schools.

The iconic name of Benaco comes from the Garda Lake, called *Benacus* by the Latins, one of the largest sailing training spots in Italy.

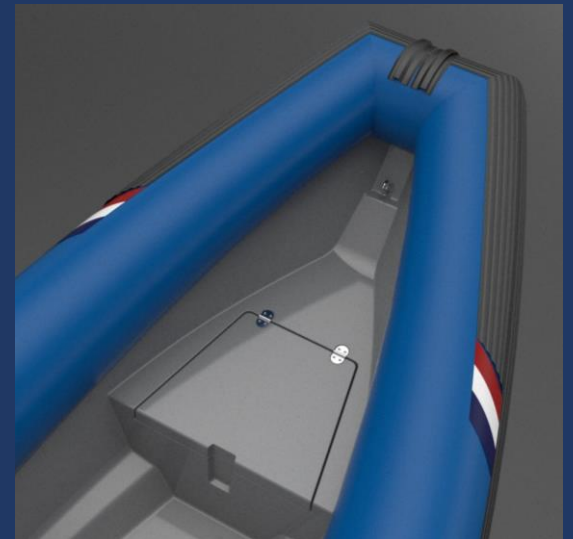
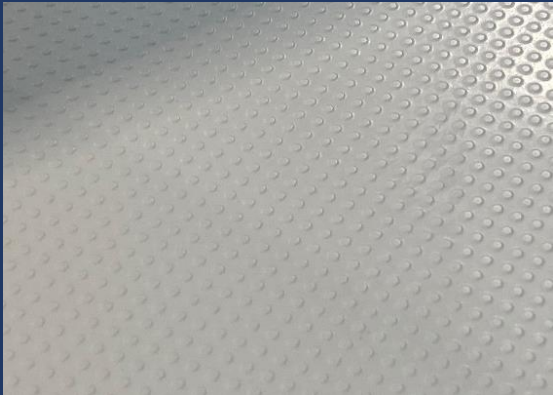
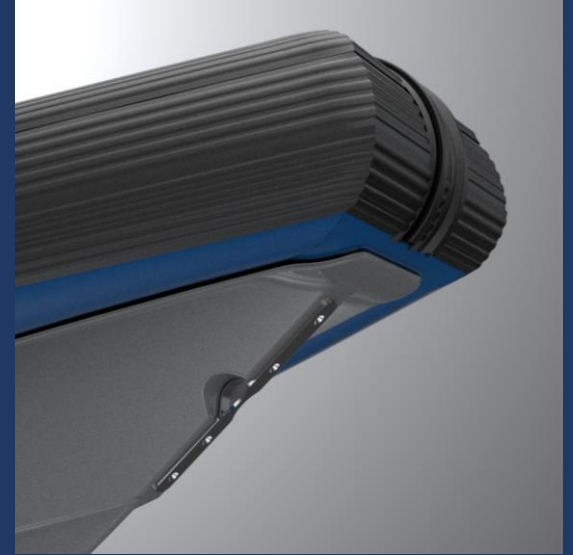
A rib prepared to meet the stringent demands of the sailing industry.



- High performance even in adverse weather and sea conditions
- Excellent maneuverability skills enable tight, precise turns at both high and low speeds
- Sharp bow and high deadrise angle at the stern (20°) ensure precision and directional hold on every regatta field
- Hull made through the use of vinyl ester resin, bidirectional and bonded fabrics
- Professional and sophisticated pixel anti-slip



- Generously wide forward area
- Ergonomics, stowage compartments, easy handling, space availability for technical equipment and instruments
- The handrail can be used as a handhold, to tie ropes or as an action-cam hook
- Remote control on the left side, two engine instruments clearly visible on the dashboard
- Lifting suspenders, bow eyebolt with reinforced bumpers

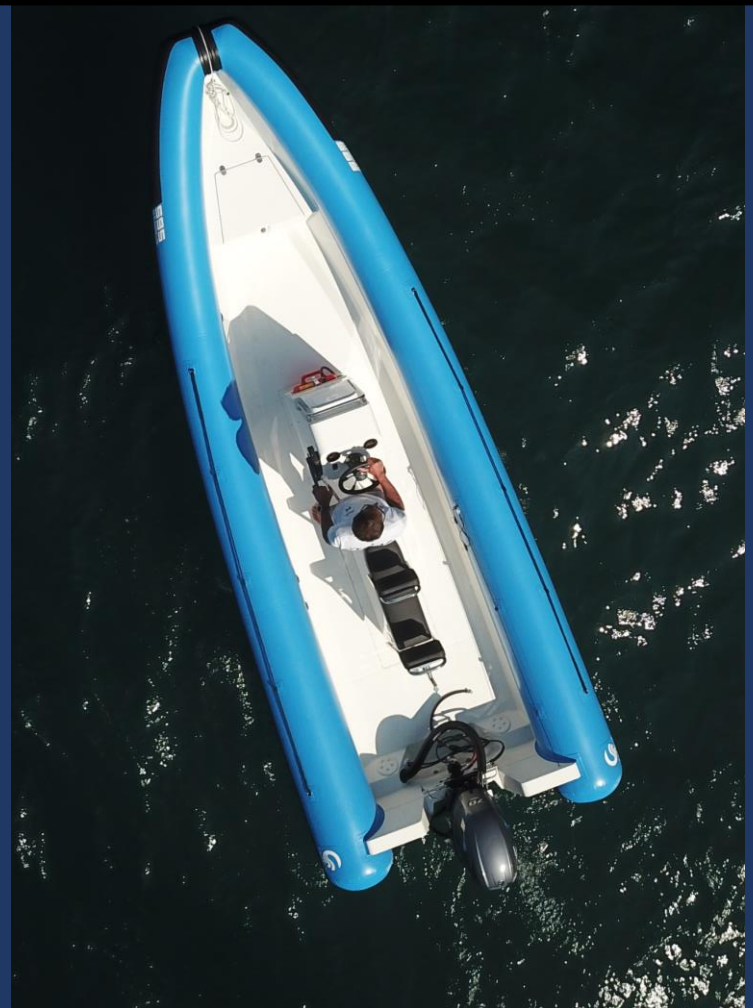


«SKIFF SUPPORT» tube layout (OPT)

“SKIFF Support” look on tube: double anti-slip reinforcement on the tube’s upper area, internal lifeline.



«STANDARD» tube layout





Project developed with the latest design technologies and in-house model making.

The Belotti NAVY series offers CNC machining centres geared to the peculiarities of shipyards.

Thanks to the wide choice of different sizes and machine configurations, NAVY is a versatile solution, allowing to process both the models and the final and structural parts of a medium-size boat: cutting resin models, trimming fiberglass hulls and other high resistance composite materials.

With a single advanced and multifunctional machining centre, maximum flexibility is obtained, being able to perform any type of modelling and trimming operation on hulls, decks and components without distinction.

- Main fuel tank - 95 lt
- Secondary fuel tank, removable - 25 lt
- Fuel gauge
- Fuel boarding in steering bench
- Fuel system prepared for dual tank management
- Fuel filter
- Blower
- Steering wheel
- Hydraulic steering system
- Double molded deck with technical non-slip
- Two-seat jockey bench
- Bilge pump
- Bow storage locker
- Technical compartment in console
- Stowage compartment in console with dual USB socket
- Bow bumper plate with towing eyebolt
- Stern eyebolts
- Lifting suspenders
- HYPALON tube
- Reinforced perimeter fender board
- Reinforced fender in the lower and upper part of the bow
- External lifeline (STD tube equipment)



OPTIONAL



- "SKIFF Support" look on tube: double anti-slip reinforcement on the tube's upper area, inner lifeline
- Country flag in HYPALON fabric (*when feasible*)
- Ski mast
- Stern FRP stowage box
- Console and bench cover
- Boat storage cover
- Engine cover

TECHNICAL FEATURES:

- Length 5,88 m
- Length _{o.a.} 5,88 m
- Beam 2,25 m
- Beam _{o.a.} 2,29 m
- Structural depth 0,78 m
- Dry weight..... 440 kg
- Dry weight + 70 hp 560 kg
- Maximum speed (70 hp) 32 kn
- Dry weight + 100 hp 606 kg
- Maximum speed (100 hp) 42 kn
- Maximum tube's diameter..... 0,48 m
- Number of compartments..... 5
- People capacity 6
- Maximum recommended load _(people + luggage + engine's weight) 760 kg
- Fuel tank capacity..... 95 lt + 25 lt
- Maximum recommended power..... 100 hp – 74 kW
(115 hp – 85 kW only for expert drivers)
- Maximum engine weight..... 220 kg
- CE design category..... C

